

CWA Group

345 Middle Road, PO Box 49, Melvin Village, NH 03850

Ph 603-544-3053 Fax 603-544-6161

www.cwagroup.net

First all-LED parking area lights up Lyndon State College



Campus photos courtesy of Michael Hnatov Photography

CWA Group and Beta Lighting are pleased to announce the completion of the first LED-only area lighting project in the State of Vermont.

Lyndon State College in Lyndonville, VT recently made the switch from HPS to LED using Beta Lighting's EDGE family of luminaires.

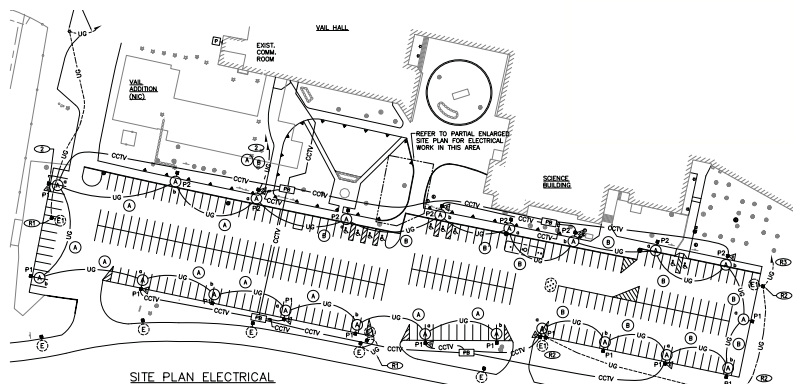
The Edge's patented NanoOptic design provides excellent optic control allowing for exceptional uniformity with little or no "hot spots". All EDGE fixtures are available with a choice of five optic distributions, are "Dark Sky" compliant, and meet full cutoff specifications.

EDGE LED fixtures carry a 5-year warranty on the LEDs and driver, 10-year warranty on the finish, contain no mercury and have a rated lamp life of over 100,000 hours.

Lyndon State College, Lyndonville, VT Campus Parking lot



- Application:** 96,750 square foot parking lot on the campus of Lyndon State College.
- Product:** (21) Beta LED EDGE area luminaires, 4 light bar optics, dual circuits for High/Low operation, Type III distribution.
- Fixtures are mounted to 4" square steel poles with an average height of 25' above finished grade.
- Benefits:** Low energy consumption (0.011 - 0.034 watts sq/ft).
- Excellent uniformity; ave to min = 3.8, max to min = 10.50.
- Low maintenance with lamp life (L₇₀) in excess of 100,000 hours.



At Left: Project drawings for the Lyndon State College parking lot showing the placement of (21) Beta EDGE LED fixtures.

Electrical Engineer: Lane Associates, Rutland, VT

General Contractor: H.P. Cummings, Woodsville, NH

Electrical Contractor: CG Electric, Danville, VT

The fixtures used to light the 96,750 square foot campus parking lot at Lyndon State College are (21) 4-light bar Area lights with Type III optics and High/Low control option. Each “light bar” contains 20 LEDs.

During high activity times these fixtures operate at 525mA, consuming 156 watts each. Average energy consumption is *.034 watts per square foot* with overall average footcandle level of *.99*.

In low activity times each fixture operates at 175 mA, consuming 52 watts each. This is an average of *.011 watts per square foot* with *.46* overall average footcandles. Both wattage levels significantly exceed the ASHREA standard of *.15* watts per square foot for uncovered parking areas.

Beta LED’s color temperature of 6000K and CRI of 75 provide more comfortable visibility than HPS and the excellent uniformity of the EDGE technology adds extra security to the Lyndon State parking area.



Recently completed Beta LED projects include:

- Scarborough Library, Scarborough, ME*
- Wells High School, Wells, ME*
- Public Safety Complex, Manchester, VT*
- Holiday Inn Express, Brattleboro, VT*
- Shaw’s Supermarket, St. Johnsbury, VT*
- Essex Middle School, Essex Junction, VT*

For more information on THE EDGE from Beta Lighting please contact us at the CWA Group or visit Beta’s website at www.betaled.com.